



Taking you
to new heights
since 2007



ecoplanet[®]
ELEVATORS



Customer Care | 24/7
1800-123-9096



ecoplanet
ELEVATORS

World's Safest & Techno Smart Elevators in India

TABLE OF CONTENT

| | |
|-----------------------------------|----|
| Introduction | 04 |
| Vision, Mission & Milestone | 05 |
| Why Ecoplanet : Highlights | 07 |
| Advantages | 08 |
| Design & Interiors: Luxury Cabins | 09 |
| Design & Interiors: Doors | 10 |
| Villa Elevators | 11 |
| Feature | 12 |
| Eco Prima | 13 |
| Technical Specification | 14 |
| Eco Spectra | 15 |
| Technical Specification | 16 |
| Passenger Elevator | 17 |
| Capsule Elevator | 18 |
| Hospital Elevator | 19 |
| Escalators | 20 |
| Eco Basic | 21 |
| Eco Classic | 22 |
| Eco Premium | 23 |
| Eco Luxury | 24 |
| Eco Safety Feature | 25 |
| Elevator Controller | 26 |

INTRODUCTION

Born from the Experience of the Finest Vertical Mobility Craftsmanship, the ECO PLANET ELEVATORS is a Custom Home Elevator / Commercial Elevator Brand in India conceived to integrate into your home and commercial establishment and be itself as an element of design. As a fully integrated Indian Elevator Company with affordable home elevators where we Design, Engineer, Install, and Maintain Vertical Transport Systems that comply with the Latest technology and Global Standards.

We began our journey with a simple concept: to achieve excellence in field of vertical Mobility. Since a decade in the field of installation, modernization and maintenance of elevators, Eco Planet Elevators & Escalators Management brings deep expertise in the field of Vertical Mobility Technology. Every product, whether custom-built to client specifications or part of a larger vertical Mobility line, is subject to stringent testing by our in-house R&D team. Our commitment and dedication is to give our customers a superior and reliable product with excellent quality and service.

This line of Custom Elevators features a Series of beautiful cabins designed to meet different tastes and styles: Basic Series, Classic Series, Premium Series and Luxury Series. Eco Planet Elevators is a brand Synonymous with Elegance, Style and Culture of Innovation. With fleeting advancements in Technology, Customization is the key differentiator. We, at Eco Planet Elevators are one of the very few, offering complete Customization of Elevators based on Customer Preferences. All our lifts can be customized for Interiors, Lighting and Control Panels that match the decor of your premises.

IN ASSOCIATION WITH



Montanari



AGT Advanced German Technology



MISSION

We are committed to elevating the maximum number of passengers and freight with utmost safety and ease. We can achieve this by penetrating deeper into the target segments and providing optimum value.

VISION

To be the most Preferred Home Elevator Brand in the Vertical Mobility Solutions Segment in India by 2025.

MILESTONE



WHY ECO PLANET: HIGHLIGHTS

Quality that will enhance your Building's Value

With a decade long history of Expertise and Market-Leading Innovations in Designs, Eco Planet Elevators has grown to become one of the leading elevator company in India. Our success is built on German Precision Engineering, Stringent Processes and Strict International Code Compliance, so that Eco Planet will enhance any Building's Value.

Specifications to meet your Building's needs

Specifications for Architectural and built environment projects, give construction teams a detailed written description of the project work to be carried out, usually including performance, standards, regulations and product selections. Our Elevators are Technically and Aesthetically designed to match those needs.

Designs to match your Building's Style

Our team of experienced designers has studied the latest trends to bring you a range of premium quality cabins that will underline your commitment to style and your building's premium. Using high-end materials, we offer a range of finishes, color coatings, mirror finish and etched stainless steel.

Enhanced Safety and Security Systems

Should power fail, the Automatic Rescue Device (ARD) releases passengers on the nearest floor for immediate exit. Our in-car camera helps property management to monitor the situation and our voice calm-down function will be activated to keep passengers notified and reduce their stress.

Layout flexibility

Eco Planet Elevators are easily configured to meet the unique specifications and needs of your building. The entire system can be self-contained within the hoist-way to speed installation and save valuable space.

Freedom of Design

From Functional to Sophisticated, Pre-Configured to Custom made – our Design options gives you the freedom to create stylish Elevators that are the perfect complement to your building.

ECO PLANET ADVANTAGES

German Precision Elevators Specially Engineered in India

- **Comfort & Quietness:** For maximum passenger comfort, our elevators are equipped with an ultra-smooth drive system (gearless motor system) ensuring extremely silent and smooth movements during start, accelerate and deceleration.
- **Stringent Quality Controls**
- **Proactive Response System Using the I.O.T Platform**
- **Energy Efficient:** Our flat-belt technology, drives and gearless machines make our elevators among the most energy-efficient elevators on the planet.
- **Simple Maintenance:** Thanks to its integrated and consistent design, the Eco Planet Elevator is a quality product born from strong manufacturing & engineering experience. Thus it requires minimal and basic service.
- **Unparalleled Customer Service:** We operate through a network of Selected Highly Professional and Licensed Technicians who are periodically trained on site.

Reliability: Built with a lifetime of Service in mind, every Generation Next Elevator offers Superior Quality and Reliability.

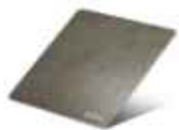


DESIGN & INTERIOR: LUXURY CABINS

The New LUXURY Series redefines Simplicity giving you Vertical Transportation Experience with wide range of technologically advanced features with German Precision & Craftsmanship at its heart. Eco Planet Elevators in collaboration with ZIELHL ABEGG, Germany, you can experience our elevators crafted for unparalleled comfort and performance to suit your needs.

Available Finishes

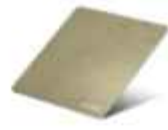
Rose Gold with Mirror, Champagne Gold with Mirror, Titanium with Mirror, Bronze Cross-Field, Luxury Leather, Nano Coated Color Options on SS



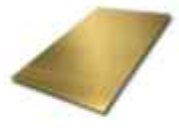
Black Titanium Gloss



Black Titanium Matt



Champagne Gold Gloss



Champagne Gold Hairline



Champagne Gold Rise Nut



Gold Cross Pattern



Gold Hairline Matt



Rose Gold Hairline Matt



Rose Gold Rise Nut



DESIGN & INTERIOR: LUXURY DOORS

The New next generation enviro-friendly CLASSIC range of elevators from Eco Planet Elevators is made with finest German craftsmanship and years of research and development that has gone into the minutest detail to make it technological marvel. CLASSIC Series is equipped with State-of-the-Art Critical Components like Ultra High Precision integrated Close Loop VVVF Drives with DTI and Direct Landing Technology and Stylish Human Interface Devices together which outperform, to give an impeccable elevator ride.

Available Finishes

Rose Gold Lenin, Champagne Gold Matt, SS Sand Blast, Titanium Rise Nut, Leather



SS Hairline Finish



SS Scratch Proof Finish



SS Leather Finish



SS Matt Finish



SS Scratch Proof
Bronze



Starlight Series - Gold
Mist



Starlight Series - Rose
Gold Mist



Villa Elevators



ENERGY EFFICIENT

Powered by a gearless PMS Motor, saving upto 40% power consumption which makes our Elevators Energy Efficient.



SPACIOUS CABIN

Designed to keep space utilization in mind giving the maximum usable space considering a wheelchair for physically impaired.

DOOR SENSORS

Infrared Door for Safety of the Passengers.

SMOOTH & SILENCE OPERATION

Eco Planet Villa Elevator comes with Gearless PMSM machine giving ultra-silent ride.

UNLIMITED DESIGN OPTIONS

Wide range of Aesthetic Options available in Doors and interior Fitting Options.

Key Figures

PASSENGER CAPACITY
272,340,408 KGS

SPEED
0.60 MPS - 1.5 MPS

STOPS
Max 4 Stops

TRAVEL HEIGHT
15 Mtrs



NO. OF ENTRANCES
1 or 2



CABIN HEIGHT
2400-3100 MM

DOOR HEIGHT
2000-3000 MM

AVAILABLE DOOR TYPE
Centre Opening or
Telescope Opening



**Belt Drive Machine
Made in Germany**



FEATURES:

- **Energy Efficient**
Powered by a gearless PMS MOTOR, saving up to 80% power consumption which makes our Elevators Energy Efficient.
- **Door Sensors**
Infrared Door Sensors for Safety of the Passengers
- **Smooth & Silent Operations**
Eco Planet Villa elevator comes with Gearless PMSM machine giving ultra-silent ride
- **Spacious Cabin**
Designed to keep space utilization in mind giving the maximum usable space considering a wheelchair for physically impaired.
- **Unlimited Design Options**
Wide range of Aesthetic Options available in Doors and Interior Fitting Options

KEY FIGURES:

- Passenger Capacity: 272, 340, 408 KGs
- Speed: 0.60 MPS – 1.5 MPS
- Stops: Max 4 Stops
- Travel Height: 15 Mtrs
- No. of Entrances: 1 or 2
- Cabin Height: 2400 - 3100 MM
- Door Height: 2000 – 3000 MM
- Available Door Type: Centre Opening or
- Min. Headroom: 3000 MM
- Pit Room Size: 250 MM
- Main Power Supply: 220V Single Phase, 50 HZ
- Low Decibel Level
- No Greasing or Oiling required
- IOT Device for Safety
- Coin tested for Ultra Smooth Ride



TRACTION SERIES
VILLA ELEVATORS



TECHNICAL SPECIFICATION

FEATURES

- Dynamic Gearless Belt Drive Motor.
- Automatic Outer Swing Single/Double Door Options.
- Pittless (50mm Max) & Head Roomless.
- Glass or Solid Shaft Panels.
- Shaft Enclosure supplied with the lift.
- Safety Edges around Platform.
- Optimal Design Size.
- Energy Efficiency (Low Power Usage).
- Lowest Maintenance & Operating Cost.
- Minimal Building work & Quick Installation.
- Self Content Unit (No Separate Machine).
- Comes with Gearless Motors



Along with
Belt Drive
Motor
Technology

| | |
|------------------------|---|
| Type of Lift | Enclosed platform lift intended for use in public & commercial environments |
| Compliance | European standard EN 81-41 |
| Drive System | |
| Rated Speed | Max 0,15m/s |
| Travel Height | 15 Mtrs |
| No. Floors | G+3 |
| No. Doors per floor | Max. 2 doors per floor |
| Pit / Ramp | 50 mm (no pit is required when there is a ramp) |
| Entry | One or two sides |
| Motor | Gearless Belt Drive - Montenary |
| Door Locking system | Electrically operated deadlock |
| Power supply | 1-phase 230V 50 Hz 20 A type C MCB 3-phase 400V 50 Hz 20 A type C MCB |
| Enclosure | Solid panels or glass (optional) |
| Available Opening Size | 700mm, 800mm, 900mm |
| Shaft Sizes Needed | 990mm, 1000mm, 1100mm |
| Cabin Sizes | |

HYDRAULIC SERIES

VILLA ELEVATORS



TECHNICAL SPECIFICATION

FEATURES

- Dynamic Important Piston Motor.
- Automatic Outer Swing Single/Double Door Options.
- Pittless (50mm Max) & Head Roomless.
- Glass or Solid Shaft Panels.
- Shaft Enclosure supplied with the lift.
- Safety Edges around Platform.
- Optimal Design Size.
- Energy Efficiency (Low Power Usage).
- Lowest Maintenance & Operating Cost.
- Minimal Building work & Quick Installation.
- Self Content Unit (No Separate Machine).
- Comes with Gearless Motors



POWER
PACK



HYDRAULIC
PISTON

| | |
|------------------------|---|
| Type of Lift | Enclosed platform lift intended for use in public & commercial environments |
| Compliance | European standard EN 81-41 |
| Drive System | |
| Rated Speed | Max 0,15m/s |
| Travel Height | 15 Mtrs |
| No. Floors | G+3 |
| No. Doors per floor | Max. 2 doors per floor |
| Pit / Ramp | 50 mm (no pit is required when there is a ramp) |
| Entry | One or two sides |
| Piston & Power Pack | Morris/GMV |
| Door Locking system | Electrically operated deadlock |
| Power supply | 1-phase 230V 50 Hz 20 A type C MCB 3-phase 400V 50 Hz 20 A type C MCB |
| Enclosure | Solid panels or glass (optional) |
| Available Opening Size | 700mm, 800mm, 900mm |
| Shaft Sizes Needed | 990mm, 1000mm, 1100mm |

Passenger Elevators

MRL (Machine Roomless)



Superior machinery and brakes for smooth acceleration and deceleration - Accurate leveling - Quiet and comfortable ride



Optimized Hoisting System to reduce noise and vibrations inside the cabin for remarkably quiet operations



Robust Anti-Vibration noise isolation car frame for a high quality user experience



Bi-directional over-speed governors with progressive safety blocks to ensure safer halt during emergencies



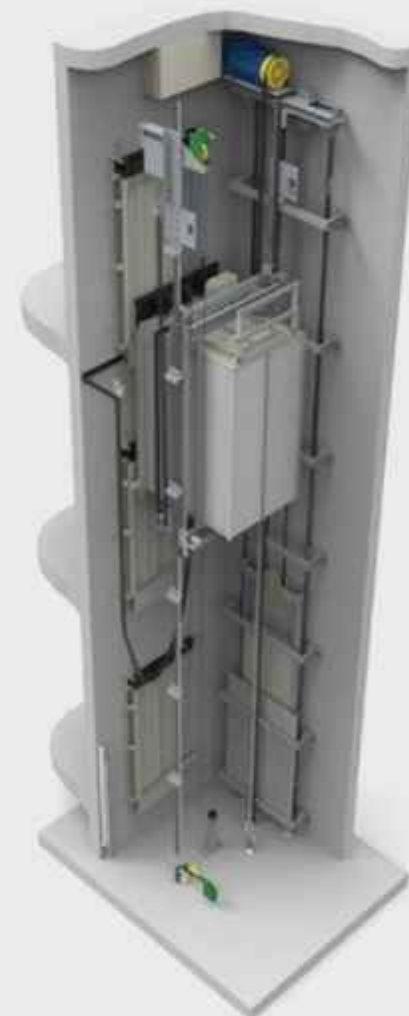
Hassle-free elevator shaft construction to rule out machine room requirement.



Low decibel level

FEATURES:

- Superior machinery and brakes for Smooth acceleration and deceleration, Accurate leveling, Quiet and comfortable ride
- Optimized Hoisting System to reduce noise and vibrations inside the cabin for remarkably quiet operations
- Robust Anti-Vibration noise isolation car frames for a high quality user experience
- Bi-directional over-speed governors with progressive safety blocks to ensure safer halt during emergencies
- Hassle-free elevator shaft construction to rule out machine room requirement.
- Low decibel level
- No Machine Room Required
- No Greasing or Oiling Required
- IOT Device for Safety
- Manual Break Releaser Facility
- Speed up to 0.6 MPS to 2 MPS
- Coin Tested for Ultra Smooth Ride
- Reduces Power Consumption up to 40 %



Capsule Elevators



Panoramic Design

Capsule elevators are beautifully designed, meticulously planned and precisely planned to give you an excellent view.



High Quality

Every part used for the manufacturing of the elevator is precisely designed and of ensured supreme quality.



Easy and Quick Installation

Elevators do not take a lot of time to be installed and set up.



Economical

Purchasing a capsule elevator can be an economical option when compared to other elevator alternatives available.



Reliable and Safe

Capsule elevators are completely safe and reliable as their functioning and operation are facilitated by the latest technology and finest parts.



Minimum Maintenance

Capsule elevators do not demand high or regular maintenance from your part. They often require maintenance or servicing annually to ensure that all the parts are in proper condition and running properly.



Smooth Operation

Parts and equipment are strategically designed, placed and assembled to ensure the long and efficient running of the elevator.

FEATURES:

- **Panoramic Design:** Capsule elevators are beautifully designed and precisely planned. They have a complete glass panel which provides an excellent view while in the lift.
- **High Quality:** Every part used for the manufacturing of the elevator is precisely designed and of ensured supreme quality.
- **Easy and Quick Installation:** Capsule Elevators do not take a lot of time to be installed and set up.
- **Economical:** Purchasing a capsule elevator can be an economical option when compared to other elevator alternatives available.
- **Reliable and Safe:** Capsule elevators are completely safe and reliable as their functioning and operation are facilitated by the latest technology and finest parts.
- **Minimum Maintenance** Capsule elevators do not demand high or regular maintenance from your part. They often require maintenance or servicing annually to ensure that all the parts are in proper condition and running properly.
- **Smooth Operation** All the parts and equipment are strategically designed, placed and assembled to ensure the long and efficient running of the elevator.



Hospital Elevators



Designed to Carry Patients on Stretchers or Wheel-chairs



Designed with ability to move Medical Equipment with an Optimum mix of Fixtures



Designed to carry up to 26 passengers



Geared (With Machine Rooms) & Gearless (Without Machine Room) elevator



Wide Door Opening Options ranging from 900 mm to 1500 mm

FEATURES:

- Designed to carry Patients on Stretchers or Wheel-Chairs
- Designed with ability to move Medical Equipment's with an optimum mix of fixtures
- Designed to carry up to 26 Passengers
- Wide Door Opening Options ranging from 900 MM to 1500 MM
- UCM Device (For Car & Counter Track)
- Live Monitoring Facility
- Live Intercom Facility
- Can be Operated through MOBILE APP
- Ultra Smooth Ride
- Auto Break System



Escalators



Safe and Reliable

Eco Planet prioritizes passenger safety with industry leading standards for a secure and dependable journey.



Energy Efficient

Integrated with our latest energy saving technology, our escalator has a best in class energy rating of A+++.



Compact Design

A new compact design for more business space in your buildings.



Enhanced Adaptability

Distinctive custom design options for seamless integration in small commercial spaces and upscale shopping centers.

FEATURES:

- Designed to carry Patients on Stretchers or Wheel-Chairs
- Designed with ability to move Medical Equipment's with an optimum mix of fixtures
- Designed to carry up to 26 Passengers
- Wide Door Opening Options ranging from 900 MM to 1500 MM
- UCM Device (For Car & Counter Track)
- Live Monitoring Facility
- Live Intercom Facility
- Can be Operated through MOBILE APP
- Ultra Smooth Ride
- Auto Break System



eco BASIC SERIES

Minimalistic, Simple and Reliable!!!

With ECO-BASIC SERIES elevating is made simple and Minimalistic in design. Our Elevators are Easy to Choose, plan and easy to use. It's Safe, Secure, Simple yet Stylish and Strong. Our Elevators are designed to meet and serve Mid-Rise Residential Buildings, comfortably, quietly, efficiently and with style. Eco BASIC SERIES effectively combines Advanced Technology with latest features that brings comfort within everyone's reach. While users experience remarkable ride comfort, building owners get an economical solution with multiple savings. This Series brings the comfort of gearless technology to your buildings. Created to enhance the modern and contemporary look of low, mid & high-rise residential buildings and low & mid-rise commercial buildings.

ADVANTAGES of ECO BASIC SERIES:

- Gearless Technology delivers better Ride Comfort.
- Aesthetics design that is pleasing to the senses.
- Utilizes Less Energy than geared machines & Improves Safety

APPLICATION RANGE (MRL)

| | |
|-----------------------|--|
| Passenger Capacity | 4 - 30 Pax |
| Loads (Kgs) | 272 - 2040 Kgs |
| Pit Requirement | 1500 mm (5 Ft) |
| Head Room Requirement | 5000 mm (15 Ft from FFL) |
| Travel Height Range | Upto 36 Mtrs |
| Stops | Upto 12 Stops |
| Speed | 1.0 - 1.5 MPS |
| Controller | Simplex Full Collective |
| Machine Type | PMSM Gearless Machine |
| Drive | Arkel with Variable Voltage Variable Frequency (VVVF Drive) |
| Motor | Montenary / Nidec(KDS) |
| Controller | AR KEL Microprocessor Based with IoT Technology |
| Steel | Jindal SS 304 Grade Rust Proof Hairline Finish with 1.2 mm Thick |
| Guiderrails | Monteferro |
| Rope | Usha Martin / Gutsvauff |
| Travelling Cables | Finolex / Microtherm |
| Door Operator | Genesis / Wittur |
| Main Power Supply | 415 Volts, 3 Phase, 50Hz AC |

AVAILABLE FINISHES :



SS Hairline Matt



SS Wood Finish



SS Design



SS Mirror Finish



*Cabin Designs that
elevate your sense.*

eco Classic SERIES

Stylish yet Functional & Flexible!!!

ECO CLASSIC SERIES designs are based on the many elements now come in more distinct finishes as well. Along with the popular regular Stainless Steel Finish, the Cabin Interiors are offered in such tantalizing finishes as Wood Fusion, Art Décor Panels, Stainless Steel with Exotic Motif that are designed to complement every building's unique design style. With many Panel design options, this series offers flexibility and ease of choice when it comes to selecting the elevator that ideally suits your building's aesthetic needs. Each design sets a modern benchmark for buildings with its stand-alone finish, exclusive patterns and user-friendly interfaces. Our flexible solution that unifies form and function, Eco Classic Series is the all-round elevator, with outstanding architectural flexibility for car, door, and shaft dimensions. And, with German precision engineering and the latest technologies, our passengers are ensured a smooth and safe user experience. We've engineered this Series to ensure Smooth, Quiet, and Economical operation throughout your elevator's long life cycle, for every application, and in any environment.

APPLICATION RANGE (MRL)

| | |
|-----------------------|--|
| Passenger Capacity | 4 - 30 Pax |
| Loads (Kgs) | 272 - 2040 Kgs |
| Pit Requirement | 1500 mm (5 Ft) |
| Head Room Requirement | 5000 mm (15 Ft from FFL) |
| Travel Height Range | Upto 36 Mtrs |
| Stops | Upto 12 Stops |
| Speed | 1.0 - 1.5 MPS |
| Controller | Simplex Full Collective |
| Machine Type | PMSM Gearless Machine |
| Drive | Arkel with Variable Voltage Variable Frequency (VVVF Drive) |
| Machine Location | Inside the Shaft |
| Motor | Montenary / Nidec(KDS) |
| Controller | AR KEL Microprocessor Based with IoT Technology |
| Steel | Jindal SS 304 Grade Rust Proof Hairline Finish with 1.2 mm Thick |
| Guiderrails | Monteferro |
| Rope | Usha Martin / Gutsvaulf |
| Travelling Cables | Finolex / Microtherm |
| Door Operator | Genesis / Wittur |
| Main Power Supply | 415 Volts, 3 Phase, 50Hz AC |

AVAILABLE FINISHES :



Stamped SS



Mirror Etching Decorative



Floral Etching SS



Mirror Finish SS



*Enhancing Modern
Living Spaces*

eco Premium SERIES

Redefining Luxury in Vertical Transportation!!!

Acclaimed for its perfect blend of aesthetics and functionality, the design rich KONE I MonoSpace and KONE I MiniSpace offer more flexibility to choose the ideal elevators that perfectly complement the look, feel, style and class of both your building's interiors and exteriors. The only elevators to win the coveted Red Dot Design Award for product design, the KONE I Series comes with impressive aesthetics, excellent ride comfort, energy savings and futuristic technology, all in perfect combination. Awarded for taking the quality of elevator experiences several notches higher- for the builder, developer, architect, facility manager and the end user.

ELEVATE YOUR EXPERIENCE

- Improved Comfort
- Inspired Design
- Increased Eco-efficiency
- Ideal Partner

APPLICATION RANGE (MRL)

| | |
|-----------------------|--|
| Passenger Capacity | 4 - 8 Pax |
| Loads (Kgs) | 272 - 544Kgs |
| Pit Requirement | 1500 mm (5 Ft) |
| Head Room Requirement | 5000 mm (15 Ft from FFL) |
| Travel Height Range | Upto 15 Mtrs |
| Stops | Upto 5 Stops |
| Speed | 1.0 - 1.5 MPS |
| Controller | Simplex Full Collective |
| Machine Type | PMSM Gearless Machine |
| Drive | Arkel with Variable Voltage Variable Frequency (VVVF Drive) |
| Machine Location | Inside the Shaft |
| Motor | Montenary / Nidec(KDS) |
| Controller | ARKEL: Microprocessor Based with IoT Technology |
| Steel | Jindal SS 304 Grade Rust Proof Hairline Finish with 1.2 mm Thick |
| Guiderrails | Monteferro |
| Rope | Usha Martin / Gutsvauf |
| Travelling Cables | Finolex / Microtherm |
| Door Operator | Genesis / Wittur |
| Main Power Supply | 415 Volts, 3 Phase, 50Hz AC |

AVAILABLE FINISHES :



Rose Gold SS



Antique Bronzes SS



Champagne Gold Matt SS



Anti Scratch SS



*Blending Customization
and Technology*

eco
Luxuria
 MAHARJA SERIES

Redefining Luxury in Vertical Transportation!!!

Compared to the Standard models, the luxury lifts come with enormous benefits. The advancement in technology further encourages integrating many new feature and specifications to the lifts. This further increases the lift's functionalities and performance. The luxury lifts feature high-end designs. They are made of top quality materials and offer various material choices to build your own lift. You are absolutely flexible to customize the lift that can suit your home interior and space available. The need to make modifications in your existing home can be completely eliminated by customizing the luxury lift according to the requirements. The content of many advanced features and specifications would certainly distinguish the luxury lifts from other models. Perhaps, they also make the difference in cost. However, something that you can assure to experience from the luxury lift is the smooth operation with automated features. Home lifts are the luxury statement.

APPLICATION RANGE (MRL)

| | |
|-----------------------|--|
| Passenger Capacity | 4 - 8 Pax |
| Loads (Kgs) | 272 - 544Kgs |
| Pit Requirement | 1500 mm (5 Ft) |
| Head Room Requirement | 5000 mm (15 Ft. from FFL) |
| Travel Height Range | Upto 15 Mtrs |
| Stops | Upto5 Stops |
| Speed | 1.0 - 1.5 MPS |
| Controller | Fully Collective Microprocessor Based Controller |
| Machine Type | PMSM Gearless Machine |
| Drive | Arkel with Variable Voltage Variable Frequency (VVVF Drive) |
| Machine Location | Inside the Shaft |
| Motor | Montenary / Nidec(KDS) |
| Controller | ARKEL Microprocessor Based with IoT Technology |
| Steel | Jindal SS 304 Grade Rust Proof Hairline Finish with 1.2 mm Thick |
| Cuiderails | Monteferro |
| Rope | Usha Martin / Gutsvauff |
| Travelling Cables | Finolex / Microtherm |
| Door Operator | Genesis / Wittur |

AVAILABLE FINISHES :



SS Designer Gold



Antique SS



Antique Bronzes SS



Champagne Gold Matt SS



*Luxury
 Redefined*

- UCM Device (Unintended Car Movement)
- Microprocessor Based Controller with Display
- 24/7 Customer Care
- IOT Technology
- Live Intercom
- Live Monitoring
- Online Error Clearance
- Child Lock
- Mobile Operated with QR Code
- Emergency Push to Talk Option
- Auto Sensors with Children Safety
- Energy Saving Mode
- Access Control with Mobile App
- Auto Rescue Device (ARD)
- Emergency Evacuation Feature
- Over Speed Governor
- ACOP Certified Mayr Disc Brakes
- Fire Fighting Mode Feature
- Light Curtain Sensor with Children Safety
- Overload Sensor

RIDE IN CONFIDENCE WITH ECO PLANET ELEVATORS

UCM DEVICE

- This Device protects against Unintended Car Movement caused by snapping of ropes and it works on a Double Roller.
- UCM is activated by Over Speed Governors in case of Lift Crossing the Limit Speed.



ACCESS CONTROL

- These Devices are used to Control unauthorized and unwanted guests.
- To Limit the access of people with Smart Security systems



DOOR SENSORS / LIGHT CURTAINS

- This System adopts the dense Infrared Light Curtain to form a Light Curtain Protection Safety Net at the entrance of the Elevator and can quickly respond to any person or object entering the cabin.



20 Safety
Elements

ELEVATING YOU TO HIGHER
STANDARD OF LIVING

Introducing the most Advanced Elevator Controller in India :

ArLINE Remote Monitoring, Alarm and Intercom System for Lifts

ArLIFT The Internet of Lifts



Microprocessor Based Ecocube Controller



IOT Technology



ARCODE Airline
Controller

ELEVATOR CONTROLLER PANEL FEATURES

- IOT Technology
- Live Intercom Facility
- Live Monitoring with Mobile app
- Live Remote Elevator Monitoring Solving Errors Remotely
- Cloud Monitoring & GSM Intercom
- Child Lock option with warning alarm
- Energy saving mode.
- Fire-fighters mode
- Instant Alarm & Error Notifications via SMS & Email.
- Smooth running of Elevators with Minimal Break Downs
- Easy Connection using only Single cables
- Controllers accompanies Auto Rescue Device (ADR) as per Load Capacity
- No need electrical connections between controller and inverter
- Less component and easy troubleshooting.
- Automatic evacuation on battery's.
- Manual Break release (sev) key in gearless panel
- Number of floors up to 64 floors.
- Speed range up to 4.0m/s.
- Group operation up to 8 lifts
- Car wiring with CAN bus serial communication.
- Remote connection to ARCODE with Can bus pluggable handset.
- SD-card for updating the firmware and storing data.

Motor Features

The new gearless Montenary Elevator Motors responds to one of the most demanded lift systems in the Indian market. It maximizes installation needs and cost optimization while enhancing ride comfort and safety which is for us a priority. An eXcellent ride starts with Montenary Motors.

KEY FEATURES:

- AUTO Break Systems with Disc Brakes.
- High Energy Efficiency
- Low Noise Levels.
- Corrosion Protection by Special Coating
- Self-Lubricated Bearings to ensure Lifelong Lubrication
- High Strength & Durable Traction Sheaves
- Double Electrical Circuit Brakes
- Payload upto 6500 Kgs
- Speed upto 4.0 MPS
- Disc Brakes Certified against UCM (Unintended Car Movement)
- Traction Sheave diameter of 120 mm to 640 mm
- In Built ERN-1313 German Encoders

The European Heart inside Indian Elevators

AN EXCELLENT RIDE
STARTS WITH



GENERIC TECHNICAL SPECIFICATION

OF AN ELEVATOR AS PER ISO STANDARDS

| DIMENSIONS as Per ISO STANDARDS Set by the Government | | | | | | | | |
|---|----------------|--------------------------|-------------------------------|-----------|---------------------------|--|-------------------------------|------------|
| No. of Passengers | Load (In Kgs.) | Cabin Size (W x D) in MM | Lift Shaft Size (W x D) in MM | Door Type | PITT Size (in Feet) DEPTH | HEAD ROOM (in Feet) From Ceiling Level | Door Opening Entrance (In MM) | |
| | | | | | | | CENTER | TELESCOPIC |
| 4 | 272 | 800 x 800 | 1200 x 1200 | AUTOMATIC | 5 Ft | 5 Ft | 600 | 700 |
| 4 | 272 | 900 x 800 | 1300 x 1200 | AUTOMATIC | 5 Ft | 5 Ft | 700 | 800 |
| 5 | 340 | 1000 x 900 | 1500 x 1400 | AUTOMATIC | 5 Ft | 5 Ft | 700 | 800 |
| 6 | 408 | 1100 x 1000 | 1500 x 1500 | AUTOMATIC | 5 Ft | 5 Ft | 700 | 800 |
| 8 | 544 | 1300 x 1200 | 1800 x 1800 | AUTOMATIC | 5 Ft | 5 Ft | 800 | 900 |
| 10 | 680 | 1350 x 1350 | 1900 x 2100 | AUTOMATIC | 5 Ft | 5 Ft | 900 | 1000 |
| 13 | 884 | 1500 x 1400 | 2100 x 2000 | AUTOMATIC | 5 Ft | 5 Ft | 900 | 1000 |
| 16 | 1088 | 1800 x 1800 | 2700 x 2400 | AUTOMATIC | 5 Ft | 5 Ft | 1000 | 1100 |
| 20 | 1360 | 1900 x 1900 | 2700 x 2700 | AUTOMATIC | 5 Ft | 5 Ft | 1000 | 1100 |

HUMAN INTERFACE DEVICES

Our Cabins and Landing Operating Panels and Options, such as Handrails, Mirrors and Lighting, suit your chosen styling to give your elevator the perfect Finish — down to the smallest detail. Eco Planet Elevators provides numerous options of Car Operating Panels (COP) & Landing Operating Panel (LOP) in terms of Design, Features and Functionality. The same goes with Mirrors and Lighting options as well.

Accessorize your Elevator with Style

OPERATING PANELS : COP & LOP

Make your elevator easy to operate for all passengers – helping them locate the elevator and get to their selected destination comfortably. High resolution indicators are easy to read, and energy-efficient operating panels are made from high-quality materials with beautiful finishing options.

“WORLD’S Slimmest and Most Adva



- In Built Security Systems (Access Control/RFID/Finger)
- Live Intercom
- Emergency Push to Talk Facility
- Video Call Facility

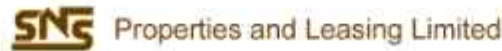
Advanced HUMAN INTERFACE DEVICES"



- IOT Technology with 2G Network Support
- Mobile Application
- Failure Notification via SMS/MAIL



OUR ESTEEMED CLIENTELES



And Many More.....



OUR BRANCHES & EXPERIENCE CENTRES

BELLARY BRANCH ADDRESS:

Site No: MIG-12, 2nd Floor, Infantry Road,
Bellary – 583101.
M: 9741359096 / 9008719096
Toll: 1800-123-9096

HASSAN BRANCH ADDRESS:

Site no: 118, IMPOS ARCADE, 2nd Floor,
2nd Cross, Mirza Mohalla,
Opp. Channaverappa Fruit Mandi, Santhepete,
Hassan – 573201
M: 9008719096 / 9741359096
P: 08172-209096

TUMKUR BRANCH ADDRESS:

#8, Sridevi Nilaya, 6th Main, 1st Block,
Behind Sri Venkateshwara Swamy Temple,
Mahalakhshmi Layout,
Batawadi, Tumkur.
M: 8197249096 / 9741359096

MYSORE BRANCH ADDRESS:

#1141, Marjushree, 18th Main, 2nd Stage, JP Nagar,
E Block, MYSORE-570008
M: 8197249096 / 9741359096

DAVANGERE BRANCH ADDRESS:

Mama's Joint. Road, 2nd Floor,
Above Peter England Showroom,
Thanvi's Tower, MCC B Block, DAVANGERE - 577004
M: 8197249096 / 9741359096

E: sales@ecoplanetelevators.in

W: www.ecoplanetelevators.in





Quality
is Our Moto
ELEVATORS AND ESCALATORS



ecoplanet
ELEVATORS

ecoplanet Elevators & Escalators Pvt. Ltd.

In collaboration with German Technology

Head Office

No.173, 10th Main, Near Sainik
Public School, Vidhana Soudha
Layout, Peenya 3rd Phase,
Bengaluru 560058,
Karnataka, INDIA

India Manufacturing Unit

Sy. No. 50, No.06,
SLV Indl. Estate, 8th Main,
Peenya 2nd Stage, KIADB,
Bangalore - 560.058

+91 80 2347 9095
+91 80 2347 9095

sales@ecoplanetelevators.in

www.ecoplanetelevators.in